

## QGW800 Smart Gateway

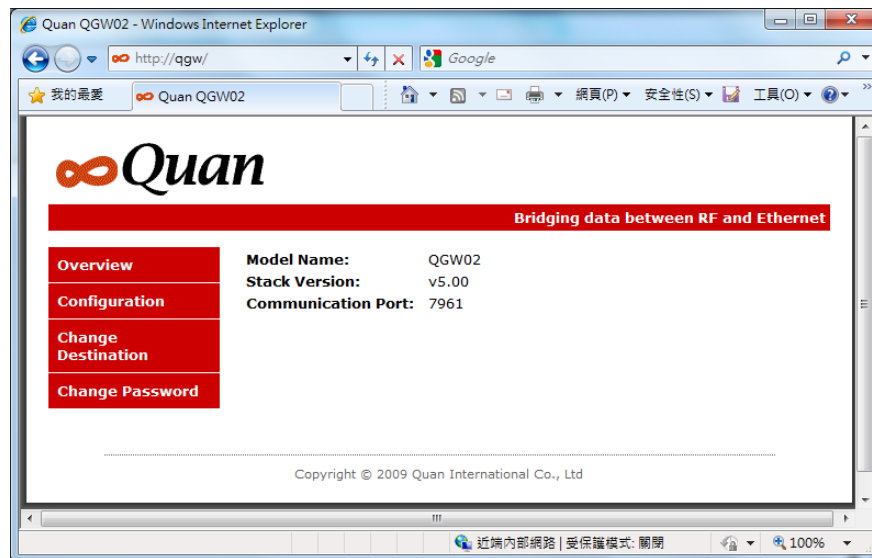


QGW800 Smart Gateway is a device which interfaces between various communication media, including WIFI, Ethernet, RS 485, Zigbee and BLE. More than a simple gateway which statically transmit data between interfaces, QGW800 can do local process via customized internal program. This capability makes QGW800 as a powerful component in Edge Computing hierarchy.

There are two computing units inside QGW800: one is network processor, which handles network protocols (like TCP/IP, MQTT, WebSocket, etc.) and storage functionality(like USB and SD card). The other computing unit is meant for real time process. This real-time processing unit is a bridge in between Zigbee/BLE socket and the network processing unit.

We provide a default application program for transparently transferring data between network and RS485/Zigbee/BLE. However, QGW800 is a small Linux-based computer. Users can customize and deploy C/C++/node.js application programs and turn QGW800 into a server.

QGW800 has an embedded web server which facilitates users configuration on WIFI network and system password.



## Applications:

- Intelligent factory
- Remote data collection
- Wireless bridge
- Electricity meter data collection
- Data logger

## Specifications:

1. IEEE 802.11n 2.4 GHz, WIF, 150Mbps, output power 18dBm.
2. Ethernet, RJ45 · 10/100MBit °
3. RS485 x 1, transparently supports user program as a serial port.
4. Zigbee, 250Kbps, output power 17dBm.

5. BLE, 250Kbps, output power 4dBm( optional).
6. Computing Units: MPU 580MH, MCU 72MHz.
7. Memory: RAM 256MB, ROM 256MB.
8. Embedded web pages for configurations of WIFI, IP, and password.
9. Buttons x 3: 1 system recovery button and 2 user defined buttons. °
- 10.External storage: SD Card x 1(Max 64GB), USB Host x 1 °
- 11.Status LEDs x 3: 1 WIFI status and 2 user defined LEDs °
- 12.Power supply: 5V DC via microUSB socket.
- 13.Operating System: OpenWrt.
- 14.Size: 92x77x20m(without antenna); 165x77x94mm (with antenna in folded position).

### **Accessories:**

- BLE Vibration Sensor
- Zigbee Vibration Sensor
- BLE Weight Sensor
- Zigbee repeater